



Exam : 642-352

Title : Storage Networking Support Specialist

Ver : 02.21.2006

QUESTION 1:

A role to permit operations in multiple VSANs has been created for a VSAN administrator.

Which of the following is correct?

- A. The VSAN administrator can change VSAN membership of F or FL ports among these VSANs.
- B. The VSAN administrator cannot change VSAN membership of F or FL ports among these VSANs.
- C. It does not matter what role or permissions have been configured for the administrator. Port membership cannot be changed without first removing the ports from the membership of the associated VSANs.
- D. It does not matter what role or permissions have been configured for the administrator. Any port type can be changed without removing the ports from the membership of the associated VSANs.

Answer: A

QUESTION 2:

Exhibit

```
switch(config)# role namesangroup
switch(config-role)# rule 1 deny config featurefspf
switch(config-role)# rule 2 permit config
```

Refer to the exhibit.

Which of the following statements is true?

- A. All users belonging to the sangroup role are allowed to perform all configuration commands except spf commands because the deny config featurefspf is listed first.
- B. All users are allowed to perform all configuration commands because the permit config command is listed last and that will globally override all other rules.
- C. All users belonging to the sangroup role to perform all configuration commands except spf commands because it does not matter what order the rules are entered.
- D. The configuration is not valid because rules are entered at the switch (config-role-vsan)#level.

Answer: B

QUESTION 3:

Exhibit



Refer to the exhibit. In Device Manager, interfaces fc1/1 and fc1/2 are members of a port-channel.

What is the meaning of the orange color on interfaces fc1/1 and fc1/2?

- A.Port-channel is down.
- B.Port-channel is up and receiving frame errors.
- C.Port-channel is up but not all members are fully active.
- D.Port-channel is administratively down.
- E.Port-channel is error-disabled.

Answer: C

QUESTION 4:

What two commands must be executed on an MDS 9000 family switch in order to change a dynamically assigned Domain ID 5 to a static Domain 10 for VSAN 10? (Choose two)

- A.switch(config-if)# shutfcdomain5
- B.switch(config-if)# no shutfcdomain10
- C.switch(config)#fcdomaindomain 10
- D.switch(config)#fcdomaindomain 10 staticvsan10
- E.switch(config)#fcdomainrestartvsan10
- F.switch(config)#fcdomainrestart disruptivevsan10

Answer: D, F

QUESTION 5:

When installing the Port Analyzer Adapter, how do you connect theFibreChannel port to the MDS switch?

- A.single-mode fiber and SC to LC connector
- B.multimode fiber and LC to LC connector
- C.single-mode fiber and LC to LC connector
- D.multimode fiber and SC to LC connector

Answer: B

QUESTION 6:

What features can be enabled to remotely monitor an MDS fabric?

- A.Syslog
- B.SNMP
- C.Port Analyzer Adapter
- D.Radius
- E.Call Home

Answer:

QUESTION 7:

What are VSANs?

- A. VSANs are a logical segmentation of a physical fabric into arbitrated loop topologies.
- B. VSANs are physical segmentations in a logical switch fabric that allow customers to create separate SAN islands.
- C. VSANs are a logical segmentation of a physical infrastructure into logical fabrics that allow customers to create logical and independent fabrics.
- D. VSANs are physical boundaries between blades on the MDS.

Answer: C

QUESTION 8:

An MDS 9216 fails to boot because no valid kickstart image is included on the internal compact flash. Which of the following plans will restore the switch to proper operation?

- A. Configure an IP address on VSAN 1 and use FTP to transfer a kickstart image to slot0.
- B. Configure an IP address in CMOS and use TFTP to transfer a kickstart image to slot0.
- C. Configure an IP address on mgmt0 and use FTP to transfer a kickstart image to slot0.
- D. Configure an IP address on mgmt0 and use TFTP to transfer a kickstart image to slot0.

Answer: B

QUESTION 9:

Which of the following statements correctly explains the function of the MDS 9000 command boot auto-copy?

- A. The command copies all files from the active supervisor bootflash: device to the backup supervisor bootflash: device.
- B. The command copies all configured boot variable referenced images from the active supervisor to the backup supervisor.
- C. The command copies only configured kickstart and system images from the active supervisor to the backup supervisor.
- D. The command copies configured boot variables from the active supervisor running configuration to the backup supervisor running configuration.

Answer: B

QUESTION 10:

Exhibit

```
switch# config t
switch(config)# int fc1/9 - 12
switch(config-if)# switchport speed 2000
switch(config-if)# switchportingress-rate 10
switch(config-if)# no shut
```

Refer to the exhibit.

The configuration shown in the exhibit will result in which maximum ingress traffic on an MDS 9120 port

- fc1/9?
- A.10MBps
- B.14MBps
- C.21MBps
- D.42MBps
- E.100MBps
- F.200MBps

Answer: C

QUESTION 11:

Match the troubleshooting commands with a corresponding issue the command is intended to address. You not use all options.

- switch# show fspf route
- switch# show fspf vsan 1
- switch# show fcroute multicast vsan 1
- switch# show fspf database vsan 1
- switch# show fcroute dnicast vsan 1
- switch# show fcroute summary vsan 1

- Verify that FC routing is enabled for the specified VSAN Place here
- Determine the LSR details for each domain in the specified VSAN Place here
- Verify the unicast and multicast routing information for the specified VSAN Place here
- Display the one-to-many routing information for the specified VSAN Place here

Answer:

switch# show fspf route

switch# show fcroute unicast vsan 1

- Verify that FC routing is enabled for the specified VSAN switch# show fspf vsan 1
- Determine the LSR details for each domain in the specified VSAN switch# show fspf database vsan 1
- Verify the unicast and multicast routing information for the specified VSAN switch# show fcroute summary vsan 1
- Display the one-to-many routing information for the specified VSAN switch# show fcroute multicast vsan 1

QUESTION 12:

The MDS 9000 family switched use what three technologies to protect against unauthorized management access? (Choose three)

- A.SNMPv3
- B.SSH
- C.RBAC

- D.RMON
- E.SES
- F.WEBM

Answer: A, B, C

QUESTION 13:

When creating an Inter-VSAN routing topology, which type of World Wide Name (WWN) must be used?

- A.Port WWN
- B.Switch WWN
- C.Fabric Port WWN
- D.VSAN WWN

Answer: B

QUESTION 14:

The Cisco Traffic Analyzer is required to gather historical data for what type of information?

- A.Class F traffic
- B.SCSI session data
- C.Class 2 errors
- D.FC framing errors

Answer: B

QUESTION 15:

During a code upgrade on an MDS 9500 switch, the upgrade process failed on one of the supervisors because the current flash images could not be copied from the active to the standby supervisor-

What possible workaround can the storage administrator execute to correct this error?

- A.Add DRAM memory to both the active and standby supervisors.
- B.Reboot the switch, enterrommonmode, and manually push the original image to both supervisors.
- C.Delete unused files on second supervisor and repeat the install.
- D.Execute ashow logcommand to check thesyslogfiles for details on the error.

Answer: C

QUESTION 16:

The system administrator receives the following message: "Error disabled - Possible port channel misconfiguration".

What three things should the administrator verify in thePortChannelconfiguration? (Choose three)

- A.Each switch on either side of thePortChannelis connected to the same number of interfaces.
- B.There are no more than 32 links aggregated together to form thePortChannel.
- C.The ports on the switch configured in thePortChannelare on the same switching module.

- D.Each ISL interface belongs to the same VSAN.
- E.Links in thePortChannelwere not changed after thePortChannelwas configured.

Answer: A, D, E

QUESTION 17:

Which tool is used to diagnose protocol errors, credit starvation, and malformed or nonstandard complaint frames or primitives on aFibreChannel network?

- A.Port Analyzer Adapter
- B.Fabric Analyzer
- C.ExternalFibreChannel Protocol Analyzer
- D.Fabric Manager

Answer: C

QUESTION 18:

Which four statistics can be generated with the Traffic Analyzer? (Choose four)

- A.CPU load statistics.
- B.Overall network statistics.
- C.Session-based statistics.
- D.N_Port-based statistics.
- E.VSAN-based statistics.
- F.FC framing errors ASIC utilization statistics.

Answer: B, C, D, E

QUESTION 19:

Which two statements about the License Manager are true? (Choose two)

- A.License Manager invoked via Device Managerdisplayslicense information for all MDS switched in the fabric.
- B.License Manager invoked via Fabric Managerdisplayslicense information for the highlighted MDS switch on the topology map.
- C.License Manager invoked via Fabric Managerdisplayslicense information for all MDS switched in the fabric.
- D.License Manager invoked via Fabric Managerdisplayslicense information only for MDS switched that are members of the VSAN currently selected on the Navigation Tree.
- E.License Manager is accessed via the standalone License Manager Server.
- F.License Manager invoked via Device Managerdisplayslicense information local to the MDS switch.

Answer: C, F

Confirmed by logging on to our Fabric which contains multiple MDS switches

QUESTION 20:

When interop mode is being used, which three features may need to be changed on the MDS 9000 switch?
(Choose three)

- A. R_T_TOV
- B. Default Zone
- C. FSPF
- D. F_S_TOV
- E. Zoning attributes
- F. TE Ports to other MDS switched

Answer: B, D, E

QUESTION 21:

While attempting to merge two fabrics together with an E_port connection, the ISL fails to initialize. Entering show interface fc1/14 returns the following: fc2/14 is down (Isolation due to ELP failure). What are two valid troubleshooting strategies? (Choose two)

- A. Use show fctimer command to verify correct timer settings on each fabric.
- B. Verify Rx buffer size match on both ends of ISL.
- C. Check domain IDs on each site of ISL to ensure they are unique.
- D. Verify speed configuration on both E_Ports.
- E. Use Fabric Manager to verify active zone set is identical on both switched.

Answer: A, B

QUESTION 22:

Exhibit

```

MDS9509-core1#
MDS9509-core1# sh environment power
-----
PS Model          Power      Power      Status
  (Watts)      (Amp @42V)
-----
1 DS-CAC-2500W    199.92    4.76      ok
2 DS-CAC-2500W    220.08    5.24      ok

Mod Model          Power      Power      Power      Power      Status
Requested Requested  Allocated  Allocated
(Watts)      (Amp @42V) (Watts)    (Amp @42V)
-----
1 DS-X9032         199.92    4.76      199.92    4.76      powered-up
2 DS-X9016         220.08    5.24      220.08    5.24      powered-up
4 DS-X9016         220.08    5.24      220.08    5.24      powered-up
5 DS-X9530-SF1-R9  220.08    5.24      220.08    5.24      powered-up
6 DS-X9530-SF1-R9  220.08    5.24      220.08    5.24      powered-up
9 DS-X9308-SM1P    210.00    5.00      210.00    5.00      powered-up

```

The exhibit shows portions of the power status and consumption of an MDS 9509.

Given the power consumption of each module, how should the power supplies be configured?

- A. redundant
- B. non-redundant (separate)
- C. non-redundant (combined)
- D. load sharing combined

Answer: C

QUESTION 23:

What are two redundancy features that are built into the MDS 9500 platform? (Choose two)

- A.statefulprocess restart
- B.dual supervisorengines
- C.microkernel adaptive response software
- D.DC power option
- E.Call-home feature

Answer:

QUESTION 24:

Place the following capabilities into the appropriate groups.

shared passwords

encryption

unencryption

roles

community string

SNMPv1 and SNMPv2

Place here

Place here

Place here

SNMPv3

Place here

Place here

Place here

Answer:

SNMPv1 and SNMPv2

shared passwords

unencryption

Place here

SNMPv3

encryption

roles

community string

QUESTION 25:

When a particular VSAN is configured as the SPAN source, which two interfaces are included? (Choose two)

- A.Physical ports in the VSAN
- B.Sub-fcinterfaces
- C.Ethernet management interface
- D.Port channels in the VSAN

Answer: A, D

QUESTION 26:

The IT Directory wants to standardize the process that the SAN team follows when troubleshooting the SAN. He wants to leverage the tools provided by Fabric Manager so that each member of the team executes the same steps when faced with a problem in the SAN.

Match the FM troubleshooting tool with the purpose it serves in the repair strategy. You may not use all options.

End-to-End Connectivity	Determine any problems that affect the components of a specific switch	Place here
Device Manager	Determine connectivity and routes among devices with the switch fabric	Place here
Zone Merge	Compare the current configuration of a switch to that of another specified switch	Place here
Fabric Configuration	Determine if two connected switches have compatible zone configurations	Place here
Switch Health		

Answer:

	Determine any problems that affect the components of a specific switch	Switch Health
Device Manager	Determine connectivity and routes among devices with the switch fabric	End-to-End Connectivity
	Compare the current configuration of a switch to that of another specified switch	Fabric Configuration
	Determine if two connected switches have compatible zone configurations	Zone Merge

QUESTION 27:

What protocol can be used in a multivendor environment to enable greater bandwidth between a Cisco MDS 9000 switch in interop mode and another vendor FC switch?

- A. FSPF
- B. Port channel
- C. FCC
- D. RDL

Answer: A

QUESTION 28:

Identify four attributes of a VSAN. (Choose four)

- A. state attribute
- B. VSAN name attribute
- C. VSAN zone attribute
- D. VSAN ID attribute

E.Load balancing attribute

Answer: A, B, D, E

QUESTION 29:

Which two features require Cisco Fabric Manager Server? (Choose two)

- A.Historical performance monitoring and reporting.
- B.MDS configuration analysis tools.
- C.Real-time performance monitoring.
- D.Continuous health and event monitoring.
- E.MDS event and security management.

Answer: A, D

QUESTION 30:

What command would a storage administrator use to determine the number of frames that exit the FC2/6 port?

- A.showfc2/6
- B.fctrace
- C.debugfibrechannelport 2/6
- D.show interface counters brief

Answer: D

QUESTION 31:

Exhibit

```
switch# show role name stg-ngnt
Role: stg-ngnt
Description: Storage Management Role
usan policy: deny
Permitted usans: 10
```

Role	Type	Command	Type	Feature
1.	permit	config		*
2.	permit	exec		*
3.	permit	clear		*
4.	permit	debug		*
5.	permit	show		*

```
switch#
```

Refer to the exhibit.

When a user RBAC policy is enabled just for VSAN 10, which of the following is true?

- A.Users can add another VSAN.
- B.Users can move a port into VSAN 10.
- C.Users can configure IVR.
- D.Users cannot modify the configuration for any configured port.

Answer: D

QUESTION 32:

A customer's data center has several MDS 9000 switched connected via Port Channel, carrying multiple VSAN traffic. The ESPP Department has requested that read-only zones be configured for storage belonging to VSAN10, attached to a specific switch (ESPP-B). To enable read-only zones for this scenario, where must the customer installed the EnterprisePackage license?

- A. ESPP-B only.
- B. Principal switch for VSAN10 and ESPP-B only.
- C. All VSAN10 switched.
- D. All switched in the fabric.

Answer: D

QUESTION 33:

When a Cisco Traffic Analyzer is being used, in which mode must a Port Analyzer Adapter be connected to an MDS FC switch?

- A. ST
- B. SD
- C. TE
- D. Auto
- E. FX

Answer: B

QUESTION 34:

Exhibit.

```
show vsan
vsan 1 information
name:VSAN0001 state:active
in-order guarantee:no interoperability mode:no
loadbalancing src-id/dst-id/oxid
vsan 100 information
name:VSAN0002 state:acuve
in-order guarantee:no interoperability mode:no
loadbalancing src-id/dst-id/oxid
vsan 7 information
name:VSAN0007 state:active
in-order guarantee:no interoperability mode:no
loadbalancing src-id/dst-id/oxid
vsan 100 information
name:VSAN0100 state:active
in-order guarantee:no interoperability mode:no
loadbalancing src-id/dst-id/oxid
vsan 4094:isolated vsan
```

Refer to the exhibit.

When a VSAN is deleted where do its port members get transferred?

- A. vsan1
- B. vsan10
- C. vsan4094
- D. vsan2

Answer: C

QUESTION 35:

You have set up a session to the SD port to enable the investigation of a problem on a particular FC port. You need to check whether this has been correctly set up for the desired port.

What command should you use?

- A.show span session
- B.showssh
- C.showtlport
- D.showfcanalyzer

Answer: A

QUESTION 36:

What is the proper command to check the membership of allVSANsconfigured on an MDS Series switch?

- A.showvsan
- B.showvsanusage
- C.show membershipvsanall
- D.showvsanmembership

Answer: D

QUESTION 37:

When issuing the Fabric Analyzer commandfcanalyzerlocal writevolititle:sample, what is the maximum size of the file sample that may be written?

- A.No maximum
- B.1 MB
- C.10 MB
- D.25 MB
- E.50 MB

Answer: C

QUESTION 38:

The Call Home feature provides what type of notification when critical events occur?

- A.SNMP
- B.Syslog
- C.PBX
- D.E-mail

Answer: D

QUESTION 39:

A host system can not write to one of the LUNs configured on a storage port. Both devices are connected to the same switch.

Which two items would be most relevant to your troubleshooting efforts? (Choose two)

- A. Verify HBAN_Portname server registration.
- B. Verify storage subsystemN_portname server registration.
- C. Verify the storage subsystem logs or LUN masking database.
- D. Verify the host has exclusive access to the LUN.
- E. Verify that any single zone in the active zone set contains both members.
- F. Verify bothN_ports are in the same VSAN.

Answer: C, D

QUESTION 40:

Issuing the show role command to check a defined role in an MDS 9000 Series switch will produce the following output:

Role: Manage

VSAN Description:

vsanpolicy: deny Permittedvsans: 24

Rule Type Command-type Feature

- 1.permitconfig *
- 2.denyconfigspf
- 3.permitdebug zone
- 4.permitexecfcping

Which of the following two functions can a user with role Manage undertake? (Choose two)

- A. Change fspf parameter .
- B. Configure FC port parameters for VSAN 3.
- C. Issue a debug command for a port.
- D. Configure zoning for all VSANs.
- E. check connectivity for VSAN 2.

Answer: B, E

QUESTION 41:

What software component is used for the Cisco Traffic Analyzer for Fibre Channel?

- A. Ethereal
- B. Ntop
- C. CSM software
- D. Cisco Works RME

Answer: B

QUESTION 42:

You are looking at the LED on an MDS 9500 Supervisor module.

If the Status LED is orange, which statement is true?

- A. The module cannot boot because of a corrupted image of the flash.
- B. The diagnostic test failed.
- C. The module is booting or running diagnostics.
- D. Incompatible power supplies are installed.

Answer: C

QUESTION 43:

How can Fiber Channel traffic be captured?

- A. Establish a trace on the Supervisor engine.
- B. Use the Fabric and Device Manager.
- C. Use the Port Adapter Analyzer and SPAN.
- D. Use the debug port command.

Answer: C

QUESTION 44:

Whom should the field OSM staff or channel partners contact for MDS 9000 technical support?

- A. Cisco TAC
- B. OSM technical specialist
- C. Cisco service account manager
- D. Cisco account SE
- E. OSMSupportCenter

Answer: E

QUESTION 45:

Zone membership is specified using Port WWN, Fabric WWN, Switch WWN, or the Fabric ID.

Inter-VSAN Zone membership is specified using a combination of the VSAN and which of the following?

- A. Port WWN
- B. Fabric WWN
- C. Switch WWN
- D. Fabric ID

Answer: A

QUESTION 46:

When connecting a Port Analyzer Adapter to an MDS 9000 family switch, the Fibre Channel port on the MDS side is configured as?

- A. TL_Port: Translative Loop Port
- B. TE_Port: Trunking E_Port
- C. SD_Port: SPAN destination port
- D. Fx_Port: operates in either F_Port or FL_Port mode

Answer: C

QUESTION 47:

What is the default policy when defining role-based access for a VSAN?

- A. Deny
- B. Permit
- C. Permit only for the default VSAN.
- D. There is no default role policy for a VSAN.

Answer: B

QUESTION 48:

What is the result of entering the command: `switch(config-role-vsantest)# permit vsan 15-20`?

- A. The command adds the permission for this role to perform commands for VSANs 15 through 20. All other configured VSANs in this role would be denied.
- B. The command removes the permission for this role to perform commands for VSANs 15 and 20. All other configured VSANs in this role would be permitted.
- C. The command removed permission for all VSAN in this role.
- D. It is not a valid command since the command must be entered at the switch `(config-role-policy-vsantest)# level`.

Answer: A

QUESTION 49:

Match the troubleshooting SAN-OS command with its corresponding output. You may not use all options.

<code>switch# debug vsan events</code>	Verifies Fiber Channel connectivity to a remote device
<code>switch# fcping</code>	Place here
<code>switch# show vsan 1 membership</code>	Displays all ports that belong to the specified VSAN
<code>switch# ping</code>	Place here
<code>switch# debug vsan membership</code>	Displays the zones and associated PWWNs within the specified VSAN
<code>switch# show vsan 1 information</code>	Place here
<code>switch# show zone vsan 1</code>	Displays events occurring in the VSAN membership database
	Place here

Answer:

switch# debug vsan events	Verifies Fiber Channel connectivity to a remote device
switch# fcping	
switch# ping	Displays all ports that belong to the specified VSAN
switch# show vsan 1 membership	
switch# show zone vsan 1	Displays hr zones and associated PWWNs within the specified VSAN
switch# show vsan 1 information	Displays events occurring in the VSAN membership database
switch# debug vsan membership	

QUESTION 50:

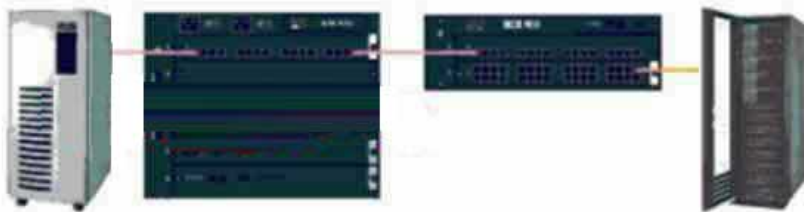
Which three CLI commands can be used to view remaining buffer-to-buffer credits? (Choose three)

- A.show interfacefcx/y
- B.show interfacefcx/y brief
- C.show interfacefcx/y counters
- D.show interfacefcx/ybbcredit
- E.show interfacefcx/y flow-control

Answer: A, C, D

QUESTION 51:

Exhibit



Refer to the exhibit. The ISL between the switched is configured so that the E port on the MDS 9506 belongs to VSAN 10 while the E port on the MDS 9216 is a member of VSAN 20. The FX port connected to the array is in VSAN 10 and the FX port connected to the host is in VSAN20.

Which statement is true with regard to the host and storage array?

- A.The host and array FLOGI will fail because of the VSAN mismatch.
- B.The host and array PLOGI will fail because the host and array register with different Name Service instances.
- C.The host and array PRLI will succeed because IVR permits transit between VSAN 10 and VSAN 20.
- D.The host and array PRLI will succeed because VSAN mismatch.

Answer: D

QUESTION 52:

Which four protocols does the Traffic Analyzer support? (Choose four)

- A.FC-SP
- B.SCSI

- C.Extended link services
- D.SW_ILS
- E.FCIP
- F.GS-3

Answer: B, C, D, F

QUESTION 53:

Associate the MDS switch booth sequence events with the corresponding process that occurs in that event. You may not use all options.

Loads Loader	POST
Loads security framework	Place here
Loads Kickstart image	BIOS
Loads kernel, drivers and SAN-OS	Place here
Performs line card checks and snake tests	LOADER
Loads Login prompt	Place here
	Kickstart Image
	Place here
	System Image
	Place here

Answer:

QUESTION 54:

Before Call Home can be enabled, which four parameters must be configured? (Choose four)

- A.Street address
- B.Contact person's phone number
- C.Contact person's name (sysContact)
- D.Interopmode
- E.Contact person's e-mail address
- F.Syslogserver address

Answer: A, B, C, E

QUESTION 55:

Exhibit



Refer to the exhibit.

What is the effect of using the Privacy Password?

- A.The management platform will use SNMPv3 for communication.
- B.The privacy password is required if the user has Administrator capabilities on the MDS.
- C.The privacy password is always required.
- D.The privacy password is entered when you want to encrypt management traffic.
- E.The privacy password is required if you want to use SNMPv3 for management traffic.

Answer: D

QUESTION 56:

What protocol does Cisco Fabric Manager use to provide continuous health and event monitoring for the Cisco MDS 9000 family of switches?

- A.SNMP
- B.WEBM
- C.SES
- D.SMI-S

Answer: A

QUESTION 57:

Which three types of network statistics can be created with the Traffic Analyzer? (Choose three)

- A.Per-LUN statistics
- B.Total bandwidth used
- C.Tx/Rx bandwidth per VSAN
- D.Tx/Rx bandwidth perN_Port
- E.Class-based traffic breakdown

Answer: B, C, D

QUESTION 58:

What MDS feature requires theEnterprisePackage to be installed?

- A.FCIP compression

- B.FICON
- C.Inter-VSAN Routing
- D.Performance Manager

Answer: C

QUESTION 59:

Which four MDS feature packages require a license? (Choose four)

- A.FCIP
- B.Fabric Manager Server
- C.Port Channel
- D.Read Only Zone
- E.VSAN
- F.FICON

Answer: A, B, D, F

QUESTION 60:

What are four valid protocols for copying software to the MDS 9000 family switched? (Choose four)

- A.Remote Copy Service
- B.Secure Copy Protocol
- C.Trivial File Transfer Protocol
- D.File Transfer Protocol
- E.Secure Trivial File Transfer Protocol
- F.Secure File Transfer Protocol

Answer: B, C, D, F

QUESTION 61:

Which two pieces of troubleshooting information does the output of the showvsan1 command provide? (Choose two)

- A.VSAN name
- B.List of ports assigned to VSAN 1
- C.VSAN state
- D.Inter-VSAN routing information
- E.Zone information for the zones configured within VSAN 1

Answer: A, C

QUESTION 62:

In 1.3X, when a licensed feature is enabled without a license key, the MDS switch enables the feature and starts a counter on the grace period.

You then have how many days to install the appropriate license keys or disable the use of that feature?

- A.30
- B.45
- C.60
- D.90

Answer: C

When a licensed feature is enabled without a license key, the MDS switch enables the feature and starts a counter on the grace period. You then have 60 days to install the appropriate license keys or disable the use of that feature. If at the end of the 60 day grace period the switch does not have a valid license key for the feature, the feature is automatically disabled by the switch.

QUESTION 63:

Inter-VSAN Routing is interoperable with other vendor switched as long as MDS switched are set to inter-op 1 mode.

Where in the fabric can the other vendor switches reside for a successful implementation of Inter-SAN Routing?

- A.core switches
- B.edge switched
- C.distribution switches
- D.remote site switches

Answer: B

IVR Guidelines Before configuring an IVR SAN fabric, consider the following guidelines:

Configure unique domain IDs across all VSANs and switches participating in IVR operations. The following switches participate in IVR operations:

All edge switches in the edge VSANs (source and destination)

All switches in transit VSANs

Configure IVR only in the relevant border switches.

An Enterprise License Package is required for this feature.

If you change any FSPF link cost, ensure that the FSPF path distance (that is, the sum of the link costs on the path) of any IVR path is less than 30,000.

IVR-enabled VSANs must be configured in nointerop (default) mode or interop 1 mode.

QUESTION 64:

Where will OSM field staff or channel partners obtain SAN-OS software updates?

- A.Cisco TAC
- B.On-line at www.cisco.com
- C.Cisco product support specialist
- D.OSM's support organization

Answer: D

QUESTION 65:

Which of the following configuration and operational parameters are preserved on MDS 9000 family switched when the configuration file is erased and the switch is rebooted?

- A.The cached FCID information is retained.
- B.The FCswitchportparameters are retained.
- C.GigEtherinterface addresses are retained.
- D.VSAN interface addresses are retained.
- E.Zone database configuration is retained.
- F.Active zone database information is retained.

Answer: F

QUESTION 66:

What is the minimum polling interval within the Device Manager Summary View?

- A.1 second
- B.2 seconds
- C.5 seconds
- D.10 seconds
- E.30 seconds

Answer: C

QUESTION 67:

What MDS feature can be used to notify an administrator or call center that a serious event has occurred in the fabric?

- A.Call Home
- B.FCC
- C.FLOGI
- D.Logging
- E.SPAN

Answer:

QUESTION 68:

Which two RMON groups does the MDS 9000 use? (Choose two)

- A.Statistics
- B.Alarm
- C.Matric
- D.Packet capture
- E.Events
- F.History

Answer: B, E

QUESTION 69:

While attempting to add a new FibreChannel device to port fc7/31, the link fails to initialize. Entering the command show interface fc7/31 returns the following output: fc7/31 is down (Fcotnot present).

What is the best troubleshooting choice?

- A. Verify optical fiber matched with laser type (ex. Multimode fiber for shortwave laser and single mode fiber for longwave laser).
- B. Verify switch port type is valid for device type.
- C. Verify SFP functionality by reseating or replacing.
- D. Verify optical fiber continuity with an optical tester.
- E. Verify speed configuration on the switch port.

Answer:

Explanation: Pending.

QUESTION 70:

If the FibreChannel speed is set at 2Gbps and the Ethernet speed is set at 1Gbps and all packets on the FibreChannel side are 2164 bytes in size, you must configure the Port Analyzer Adapter to one of two modes.

What are the two modes? (Choose two)

- A. No Truncate Mode (NTM)
- B. Ethernet Truncate Mode (ETM)
- C. Shallow Truncate Mode (STM)
- D. Management Mode (MNM)
- E. Deep Truncate Mode (DTM)

Answer: C, E

QUESTION 71:

When the Ethernet port of a Cisco MDS 9000 family Port Analyzer Adapter is configured in 1Gbps mode, what is the state of the LED that is associated with that mode?

- A. green
- B. amber
- C. blinking green
- D. off

Answer: D

QUESTION 72:

If you move a licensed Supervisor Module from one MDS Director Switch to another, what is the impact in the new switch environment?

- A.The current license will work in either Supervisor slot in the other switch.
- B.The current license will not work.
- C.The current license will work as long as the Supervisor Module is placed in the same slot as it was in the previous switch.
- D.The current license willwork,however, a switch reload is required.

Answer: B

QUESTION 73:

For comprehensive and detailed trend analysis, which two elements are required? (Choose two)

- A.Cisco Traffic Analyzer
- B.Cisco Resource Manager Essentials
- C.Cisco Data Collection Engine
- D.CiscoPortAnalyzer Adapter
- E.Cisco Traffic Collector

Answer: A, D

QUESTION 74:

What three steps must you complete before configuring Inter-VSAN Routing? (Choose three)

- A.Enable a routing protocol.
- B.Configure unique domain IDs across allVSANsand switches used in IVR operations.
- C.Configure IVR only on relevant borderswitches.
- D.Obtain an enterprise license package.
- E.Enable FSPF.

Answer: B, C, D

QUESTION 75:

In Fabric Manager,the storage administrator sees a red line through one of the switches in the map. What two things can the administrator do to troubleshoot the error alert? (Choose two)

- A.Verify that one of the power supplies of the switch has not failed.
- B.Use the Zone Wizard to create valid zones for switch participation.
- C.Execute thefcpingcommand to verify thatFibreChannel connectivity exists between the nodes and the fabric.
- D.Verify that all switch modules are plugged in and are on line.

Answer: A, D

QUESTION 76:

Which three characteristics does an SD port have? (Choose three)

- A.It ignores buffer-to-buffer credits.
- B.It allows data traffic in the egress (tx) and ingress(rx) directions.
- C.It does not require a device or an analyzer to be physically connected.
- D.Port mode cannot be changed if it is being used for a SPAN session.

Answer: A, C, D

QUESTION 77:

Which three command options does Call Home support? (Choose three)

- A.XML-destination
- B.HTML-destination
- C.short-txt-destination
- D.full-txt-destination

Answer: A, C, D

QUESTION 78:

Exhibit

```
switch# show interface fc1/11
fc1/11 is up
Hardware is Fibre Channel
Port WWN is 20:0b:00:05:30:00:59:de
Admin port mode is ST
Port mode is ST
Port vsan is 1
Speed is 1 Gbps
Rspan tunnel is fc-tunnel 100
Rcon is turned off
5 minutes input nat 48 bits/sec,34bytes/sec 0 frames/sec
5 minutes input nat 76 bits/sec,32bytes/sec 0 frames/sec
6862 frames input, 444232 bytes
0 discards, 0 errors
0 CRC, 0 unknown class
0 too long, 0 too short
6862 frames output, 307072 bytes
0 discards, 0 errors
0 input OLS, 0 LRR, 0 NOS, 0 loop inits
0 output OLS, 0 LRR, 0 NOS, 0 loop inits
16 receive B2B credit remaining
3 transmit B2B credit remaining.
```

Refer to the exhibit. In the output of the shown interface command, which two statements are correct? (Choose two)

- A.This is a FibreChannel port running at 2Gbps.
- B.This port cannot be attached to any device.
- C.This port is in slot 11 in the switch.
- D.This port is in multiple VSANs.
- E.This port mode is specified to MDS 9000 switches.

Answer: B, E

QUESTION 79:

Which command is used to display the list of hosts configured for Fabric Analyzer remote capture?

- A.showfcanalyzer
- B.clearfcanalyzer
- C.show remotefcanalyzer
- D.showfcanalyzerremote list

Answer: A

QUESTION 80:

When using interopmode on an MDS 9000 switch, what is the Domain ID range?

- A.1 to 97
- B.127 to 239
- C.97 to 239
- D.97 to 127
- E.1 to 127

Answer: D